

Consultation Report

Woodquay Park Enhancement





DOCUMENT DETAILS

Client: **Client Name**

Project Title: **Woodquay Park Enhancement**

Project Number: **230108**

Document Title: **Consultation Report**

Document File Name: **Consultation
Report_F2_230108_2024.09.17.docx**

Prepared By: **MKO
Tuam Road
Galway
Ireland
H91 VW84**



Rev	Status	Date	Author(s)	Approved By
01	Draft	10/04/2024	IR/AB	AB
02	Draft	02/05/2024	IR	MC
F	Final	09/05/2024	IR	MC
F1	Final 1 for Client Review	08/29/2024	IR	MC/PH
F2	Final	25/09/2024	IR	PH

Table of Contents

1.	INTRODUCTION.....	4
1.1	Project Background	4
2.	FEBRAURY INITIAL CONSULTATION	5
2.1	February Initial Consultation Event	5
2.1.1	Feedback.....	9
2.2	Survey Feedback	9
2.2.1	Feedback Graphics	7
2.3	February Consultation Conclusions	11
3.	JUNE CONSULTATION.....	12
3.1	Consultation Meeting.....	12
3.2	Feedback Provided.....	12
3.3	June Consultation Conclusion.....	13
4.	DEDICATED CONSULTATION WITH KEY STAKEHOLDERS	15
4.1	Bus Connects - Cross City Link Team.....	15
4.2	Access for All.....	15
4.3	Local Schools	15
4.4	Elected Members.....	16
5.	OVERALL CONCLUSION	17

TABLE OF PLATES

<i>Plate 1: Consultation Material on Display.....</i>	<i>5</i>
<i>Plate 2: Members of Public attending event.....</i>	<i>6</i>
<i>Plate 3: Members of Public Viewing Plans.....</i>	<i>6</i>
<i>Plate 4: Consultation Materials</i>	<i>7</i>
<i>Plate 5: Consultation Materials and Surveys for interactive discussion between public and design team</i>	<i>7</i>
<i>Plate 6: Model of Mary Reynolds Park Design.....</i>	<i>8</i>
<i>Plate 7: Model of Mary Reynolds Park Design.....</i>	<i>9</i>

TABLE OF APPENDICES

<i>Appendix 1: Copy of Advertisement For February Consultation.....</i>	<i>.....</i>
<i>Appendix 2: February Consultation Display Boards.....</i>	<i>.....</i>
<i>Appendix 3: February Community Consultation Survey.....</i>	<i>.....</i>
<i>Appendix 4: June Consultation Display Sheets.....</i>	<i>.....</i>

1.

INTRODUCTION

This Consultation Report will detail the process undertaken to listen to and engage with various stakeholders as part of the process to develop and implement a plan for a revitalised Woodquay Park in Woodquay, Galway City. This report sets out the consultation methods undertaken, their goals and target audiences, and a summary of the results from each method.

This project and related stakeholder consultation has been ongoing between the Local Authority and key stakeholders, including members of the public, in respect of the proposed revitalisation of Woodquay Park for a number of years. The inception of this specific project has been ongoing since the appointment of the current design team in early 2023. The project team have considered the brief and stakeholder feedback, and resultingly prepared a comprehensive design and layout for the proposed upgrade works to the park.

Public consultation on the proposed design created by LUC began in early February 2024 and continued through March 2024, with a goal of having a completed design ready for lodgement to the appropriate Planning Authority by Autumn 2024. A public consultation event was held on 6th February 2024 in Galway city, allowing the public to view the proposals. The consultation event to provide feedback via surveys remained open until 1st March 2024.

The public consultation was a cross-disciplinary and collaborative process. LUC, MKO, and Galway City Council (GCC) each contributed inputs to ensure a robust and accessible process. The overarching goal of the consultations was to gather the views and opinions of stakeholders for the park. A particular emphasis was placed on gathering views on what currently works in the area, what stakeholders wanted to see from the project, and ensuring that the final project aligns with the needs of the vibrant local community.

1.1

Project Background

Galway City Council (GCC) has progressed with the redesign of Woodquay Park following the hard work of the local residents to bring awareness to the need for upgrade works to the park and to imagine what a revitalised public space would look like for the community, through the concept redesign of the park created by renowned garden designer Mary Reynolds. LUC and MKO tendered for the project and were appointed in 2023 by GCC to review the concept proposals, develop the brief for the park with the landowner, Galway City Council, and develop a comprehensive proposal for this key city space that would align with other public realm and transport strategies. In addition, it was necessary to modify the Mary Reynolds design to ensure the deliverability of the project. Changes to her design were necessary to support future maintenance regimes, ensure alignment with the relevant planning policy and standards, accommodate the All-Ireland Pollinators Plan, incorporate further SuDS measures, and to assess and manage the impact on existing trees and habitats. The active effort of residents to improve their community has been fundamental to the project from inception. As such it was determined that consultation would be required to ensure that community buy-in and engagement with the project remained strong, particularly as it entered the planning process. GCC intends, as part of this project, to develop the public park to unlock the potential of this area and bring an amenity and biodiversity park to the area, while putting forward a wide range of offerings to the public of all ages, interest groups and the local community.

2.

FEBRAURY INITIAL CONSULTATION

During the initial consultation process, two methods were chosen to ensure that the feedback provided was both wide in audience and reach, and deep in engagement and response. It was determined that a public event would provide community members the ability to engage fully with the design team. It was also decided that the use of surveys would allow a wider range of stakeholders to take part in a more accessible manner and would enable responses to be as detailed or brief as desired.

2.1

February Initial Consultation Event

This first phase of engagement began on 6th February 2024 with a public consultation event located in the Galway Rowing Club, which is situated adjacent to the park in Woodquay. The event was advertised via a press release in the Galway Advertiser newspaper, on the Local Authority's website, and on various social media sites prior to the event. Copies of these advertisements are contained in **Appendix 1**.

The in-person Consultation Event was held from 12pm to 4pm and was open to all members of the public. Consultation Boards which illustrated the project background and the illustrations of the proposed development were displayed on boards at the event (see **Appendix 2**). In addition to the boards, copies of the proposed development were displayed on tables which facilitated round table discussions with the landscape architect, A4 copies of the presentation boards and hard copies of the community survey (as included in **Appendix 3**) were provided to attendees to allow feedback to be given at the event itself. The online version of the survey was also advertised throughout the day, to provide an option for paperless feedback via the Galway City Council Consultation Portal. Tables and chairs were laid out throughout the consultation event room, to allow members of the public to sit down to complete their surveys or discuss the proposals with members of the Design Team, who were on hand throughout the day to discuss the proposals and to answer any questions.



Plate 1: Consultation Material on Display



Plate 2: Members of Public attending event



Plate 3: Members of Public Viewing Plans

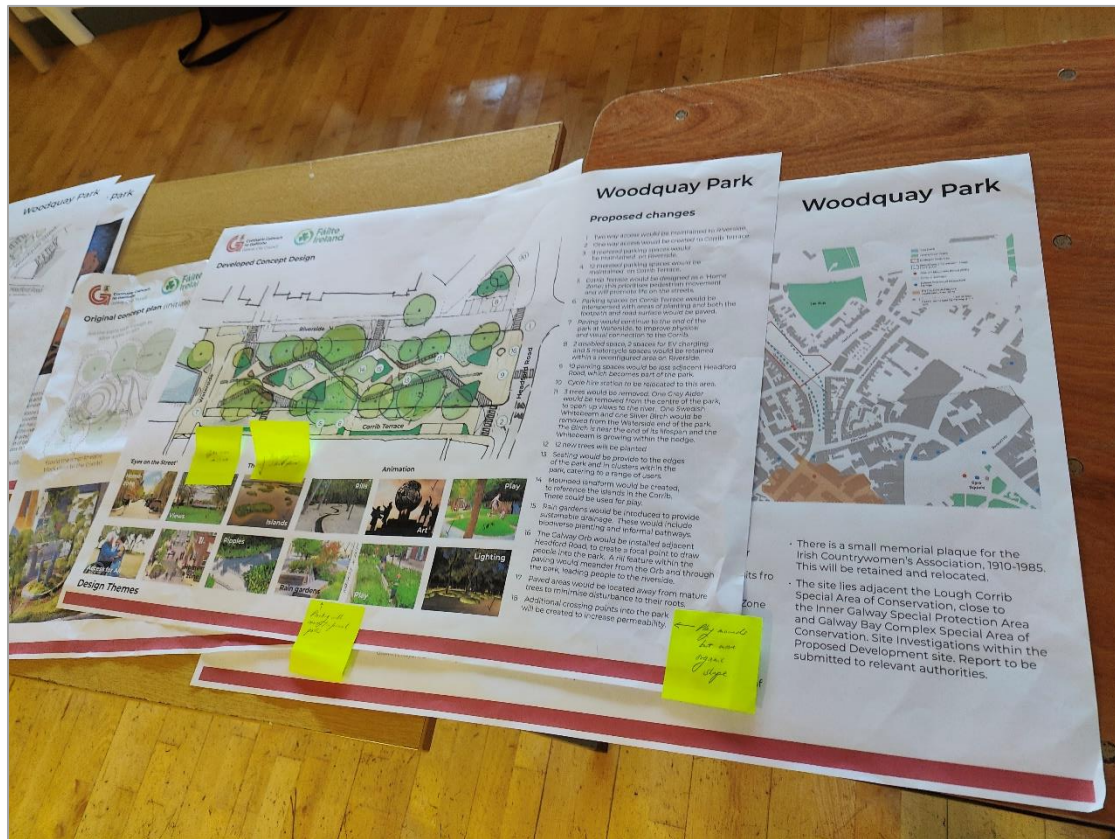


Plate 4: Consultation Materials



Plate 5: Consultation Materials and Surveys for interactive discussion between public and design team

In addition to the consultation boards displayed at the event, members of the local community also displayed the model of the original park design created by the renowned Irish gardener Mary Reynolds. This model was brought into the event space and demonstrated the comparisons between the early designs and the proposed designs. This also facilitated discussion between the public and the design team and allowed further insight to flourish in respect of the reasons for altering the design to provide a feasible alternative and upgrade to the park.



Plate 6: Model of Mary Reynolds Park Design



Plate 7: Model of Mary Reynolds Park Design

The event was well attended with 33 people signing in throughout the day, and a number of additional attendees who chose not to sign in.

2.1.1

Feedback

Feedback at the event was varied, with positive feedback from members of the public in respect of the need for upgrades to the existing park and welcomed the design of the park as illustrated at the event, while a number of members of the community expressed desire for the existing park design created by Mary Reynolds to be reused.

Key items of discussion at the event included:

- Railings remaining on park boundary,
- Proportion of green space and hard surfacing proposed,
- Specific design elements of the proposed layout,
- Loss of / Planting of trees,
- Noise and antisocial behaviour,
- Traffic layout and Parking alterations,
- Consultation with the community,
- Wildlife and biodiversity,
- Earlier Mary Reynolds design.

While some attendees voiced their opinions that no works are required to the park, there was an overall very positive response from the community in respect of the need and desire to revitalise the park and the surrounding area.

2.2

Survey Feedback

The next phase of engagement began during the public consultation event, where attendees were informed that in addition to discussions with the design team at the event, they could also provide more detailed responses on written surveys. Paper surveys and links to the equivalent online version were dispersed at the event. Immediately following the event, the digital version of the survey was published

online on the Galway City Council Consultation Portal (www.consult.galwaycity.ie) and paper copies were made available at event along with at the offices of the Local Authority for public use. The consultation boards were also left on display in the reception area of the Rowing Club which is open daily to the public. The survey was made available for a period of 3.5 weeks, from 6th February to 1st March 2024.

Following the end of the determined survey period, responses from the paper and digital surveys were combined and compiled. Overall, the surveys generated a high number of responses, 49 no. responses in total, indicating great interest and engagement with the process, in line with the community activism that initiated the project. Responses from the compiled survey were analysed and common trends, priorities, asks, and dislikes for the project were identified. A summary of the responses to the surveys can be found in section 2.2.1 below, including the categorisation of responses which saw increased engagement and novel feedback. The full response data can be found in **Appendix 4**.

In respect of responses from the public consultation, the questions asked included:

- What do you and don't you like about the park in its current form,
- What do you like about the proposed design,
- What kind of spaces do you think should be included in the park and how do you currently use the park,
- Do you feel there is anything missing from the proposed design
- Is there anything that should be retained/reflected from the local area in the new design, and
- Whether there is anything else that the consultees would like to add.

In respect of what the consultees set out that they do like about the existing Woodquay Park, they included;

- The park is a great space with trees and greenery,
- The park as a green oasis in the city,
- It is quiet and peaceful,
- It has unrivalled views of the Corrib,
- The existing hedging,
- The existing railings and the fact that the park can be closed at night to keep people out,
- That there is privacy between the residential dwellings and the public space through the existing screening,
- The fact that there is a park there, and
- Nothing at all.

In respect of what the consultees advised that they dislike about the existing park, they included responses such as;

- It is neglected and grubby,
- It is unsafe,
- It is underutilised and a space for antisocial behaviour,
- It is hidden and unused by the public,
- The trees are too big which causes light blockages to the surrounding dwellings,
- It is not accessible or wheelchair friendly,
- The materials in the park are very slippery and a fall hazard,
- There is poor lighting,
- The access is restrictive and unopen,
- There is no amenity value to the park,
- It is not open to the water nearby,
- There are no bins,
- The materials and planting in the park is very bland and limited,
- The seats are broken,
- Road safety is poor with little visibility for people crossing, and
- There is a lack of biodiversity in the park.

In terms of questions asked such as what you like about the proposed design and what you would like to see added to the park, consultees said that;

- They would like to see more useable open space that will attract more people and is suitable for elderly people to sit out,
- The proposed design is more usable than the existing park offering,
- Will be a lovely place for people and families to go,

- The new greenery,
- Segregated spaces for kids play and quiet and tranquil spaces,
- Looks more welcoming,
- Lots of more plant life and trees,
- Reduced parking around the site will open up the space more,
- Massive improvement on the existing park,
- Good connections to the surrounding area,
- Opens up the views to the river,
- Play areas and water features proposed,
- The flow down to the water,
- The removal of some of the car parking meaning less traffic and noise,
- New modern look to regenerate the area,
- Extension of park area and focus on pedestrians and cyclists,
- Enhancement to the area,
- Opens area up more, and
- One-way streets and tactile paving at park entrances, the proposed inclusion of the Orb, proposed lighting, more inviting to the public, will be less secluded looking and a safer place to visit, modern and practical feel, fresh spaces for small events and people, and accessibility for people with disabilities.

Some consultees advised that they prefer the original Mary Reynolds design, and do not like the proposed parking alternating sides of Corrib Terrace, the removal of the railings, the removal of trees, and the proposed water rill through the park. Some consultees included that they would like to see the layout being softer with less harsh angles, and would like further consultation on the design process.

In response to questions asked relating to anything felt to be missing from the proposed design and any notable features to be retained from the area, the consultee responses included mention of;

- A desire for additional grassed areas,
- Additional lighting and trees,
- Enhanced pedestrian access routes from the city to the Corrib for pedestrians,
- Lack of vision for the park,
- Mary Reynold's design,
- Sensory areas for people with autism, maps of area with old Irish placenames,
- Space needs to be community oriented,
- Maintenance and aftercare to be considered in the design,
- Materials to be used should be non-slip and accessible for people with disabilities,
- Wheelchair accessible features such as picnic benches and seating should be included,
- Railings and gates should be reinstated,
- Picnic areas should be included,
- Bins should be included in the design,
- Local heritage artwork such as the Galway Tribes could be included,
- Playground area within park, road closures on Waterside to enhance safety,
- Parking and accessible parking,
- Water refill stations,
- Artwork,
- Biodiversity,
- Child friendly spaces,
- Simplicity in design, and
- Passive surveillance and performance areas.

In respect of any additional comments, the consultees included some of the following statements:

"Don't forget the community, create a space that brings the community together."

"A great start to the transformation of this beautiful area."

"Overall think it will improve the area, only changes I would like to see would be railings so it would be safer for kids/summer camps/special needs children."

"I would have concerns about the water drain system throughout the park. Creating a 'stream/drain' will attract rubbish and may act as a public urinal at night time."

"More appropriate seating, the current ones are good but there something about them. I've never seen them full. Remember the community."

"A great opportunity to develop this little gem in the heart of the city. Keeping the area secure and litter free is very important."

“Need to have the park locked at night time to prevent large groups of people gathering drinking and engaging in antisocial behaviour.”

“We are very glad that this project has progressed to a formal planning stage and hope that extensive local input can inform the final design ... local people have given a huge amount of time to the creation of a workable design. We hope that both the designers and local authority can take this feedback on-board and we can collectively generate a plan/design that works for everybody. There is much overlap between the two designs, but a finished product will take some tweaking, moving and discussion. We'll never get a chance to do this again, so lets work together to get it right.”

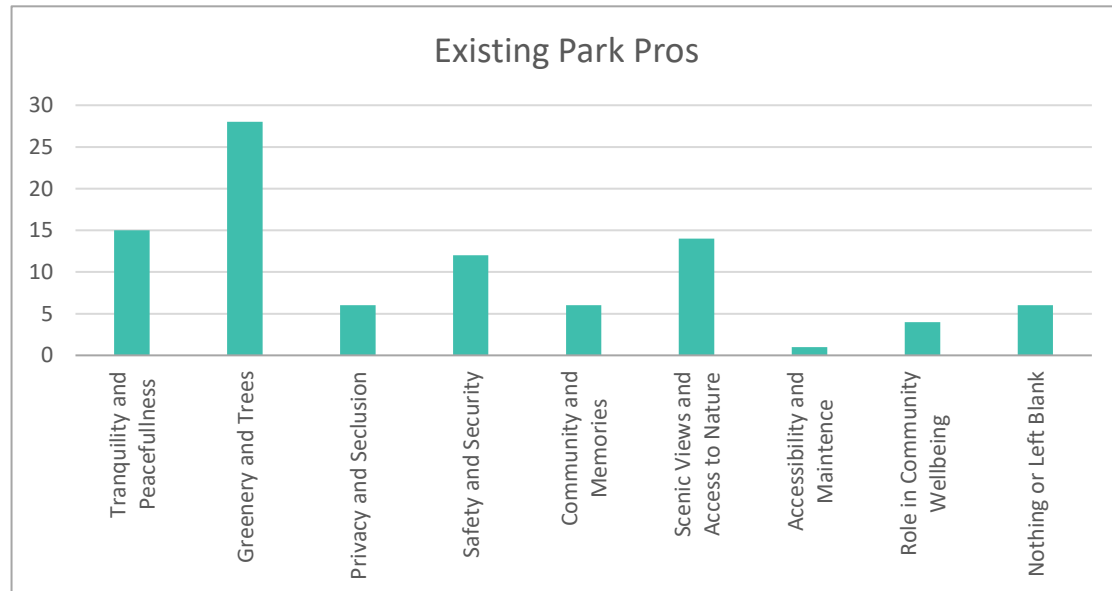
“I was born and raised in this community. Each morning I open the curtains and enjoy our beautiful green and soothing space”.

“I am excited to see what the park will finally look like and look forward to visiting the newly designed and upgraded park.”

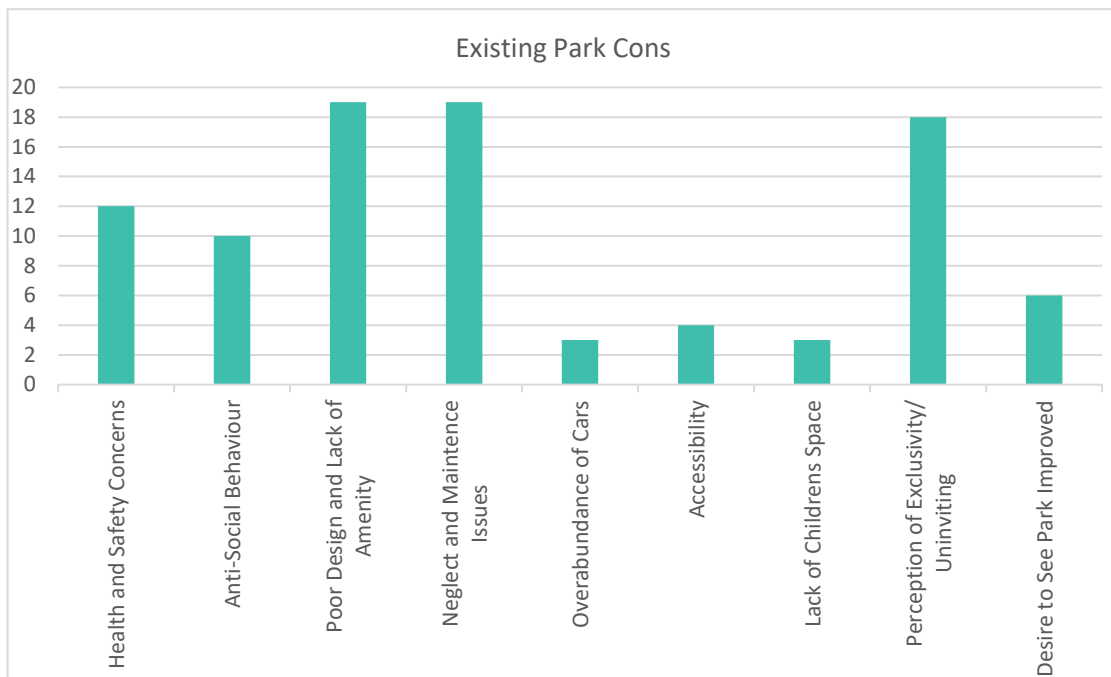
2.2.1 Feedback Graphics

Each graphic counts the number of responses that are related to a particular category. As many responses covered multiple topics within each question, some responses contributed to multiple categories. The exception to this is Question No. 4 regarding what spaces consultees thought were important to include in the park. Respondents were asked to rank each space or use on a scale from 1 to 5, 1 being ‘Not Important at All’ and 5 being ‘Extremely Important’. The chart presented below represents the average score of each space given across all consultees.

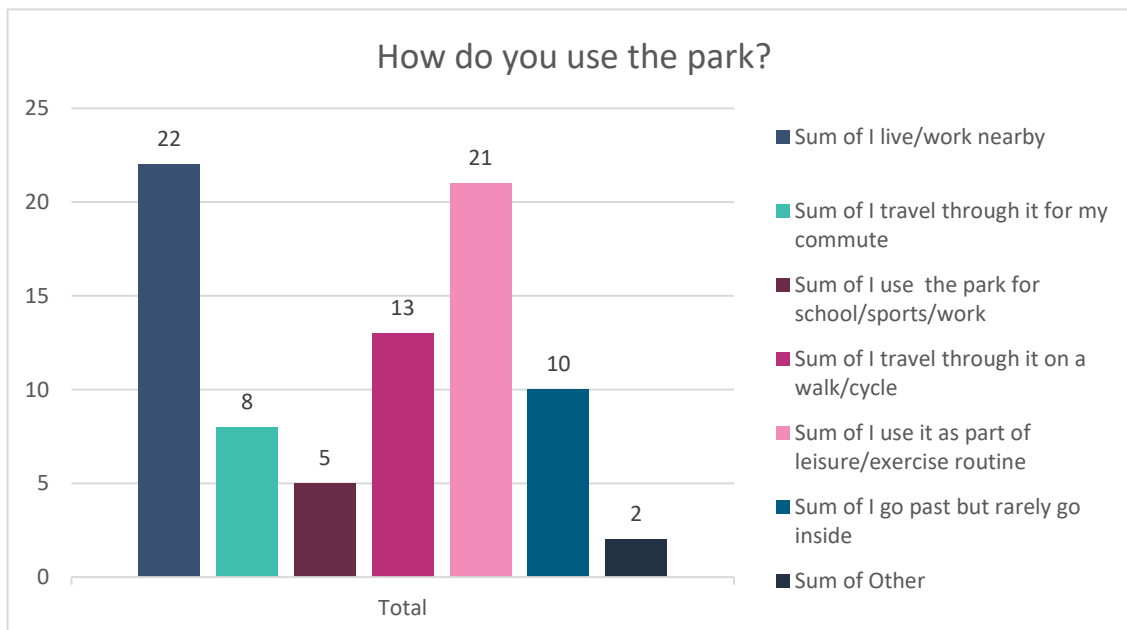
1. What do you like about the existing park?



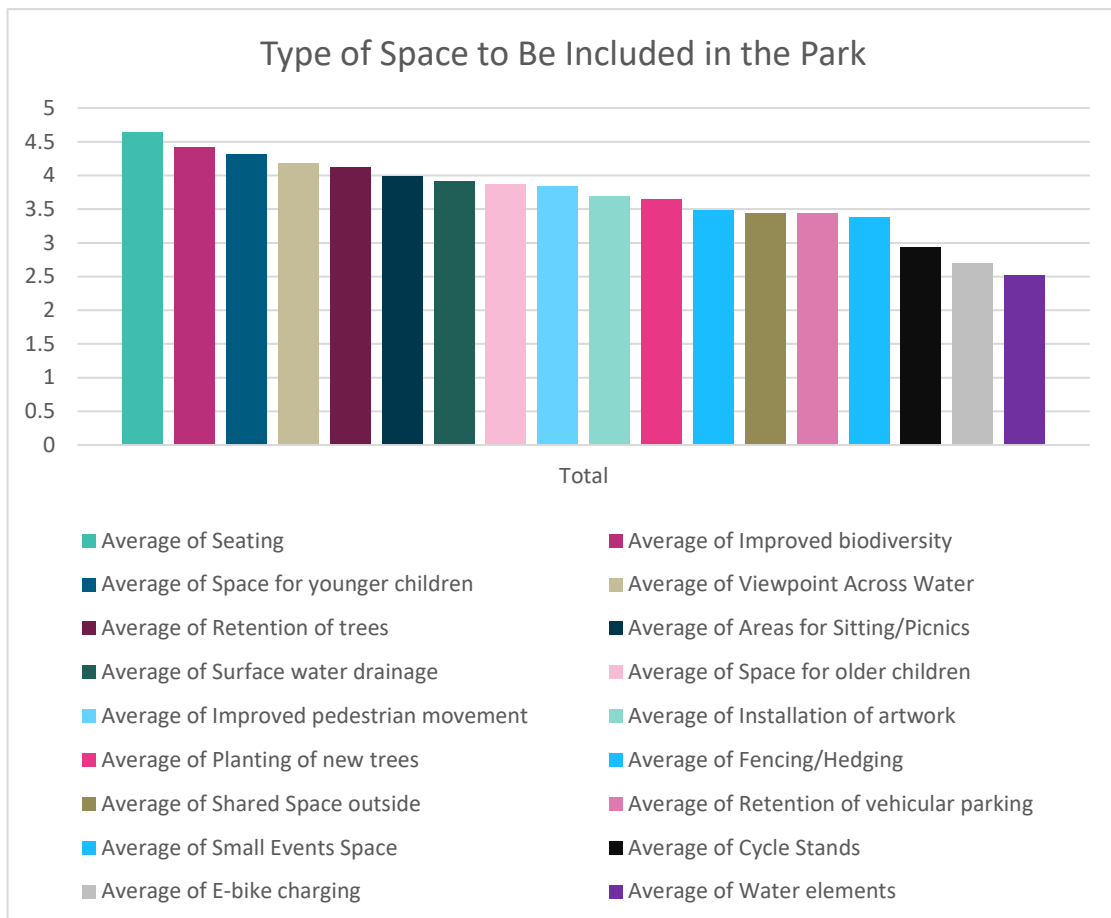
2. What don't you like about the existing park?



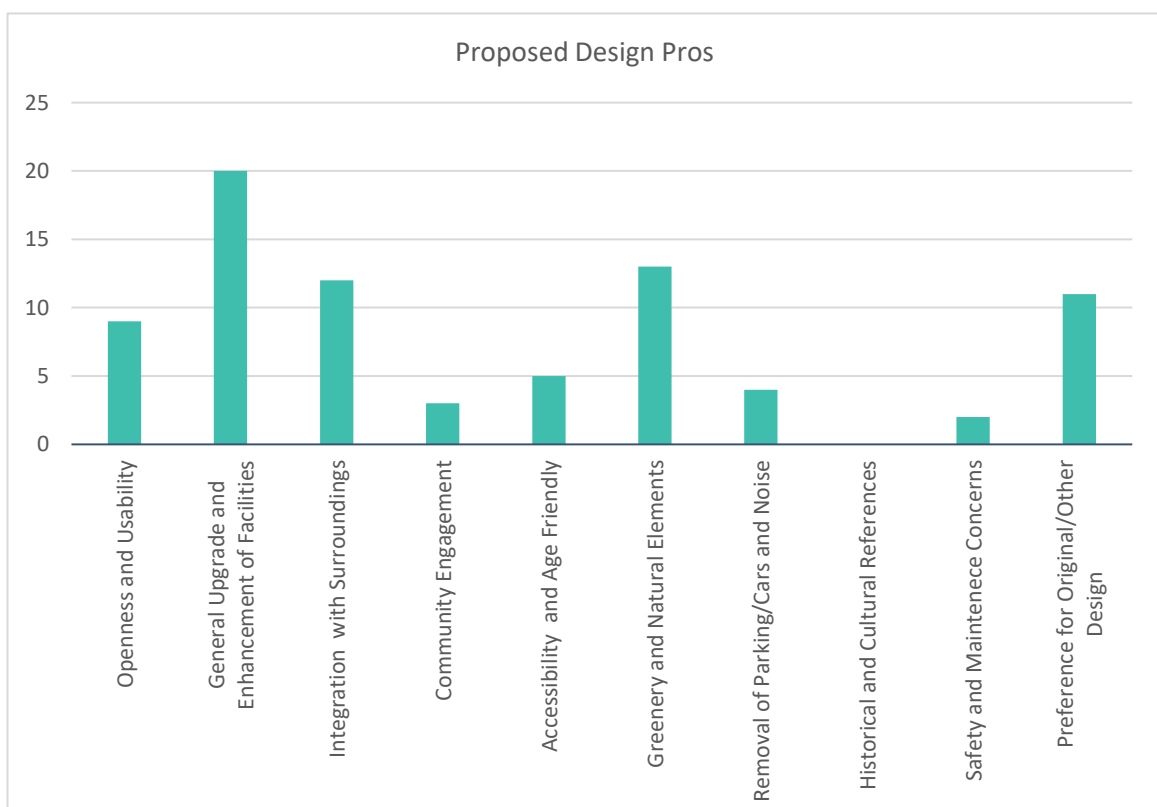
3. How do you use the park currently?



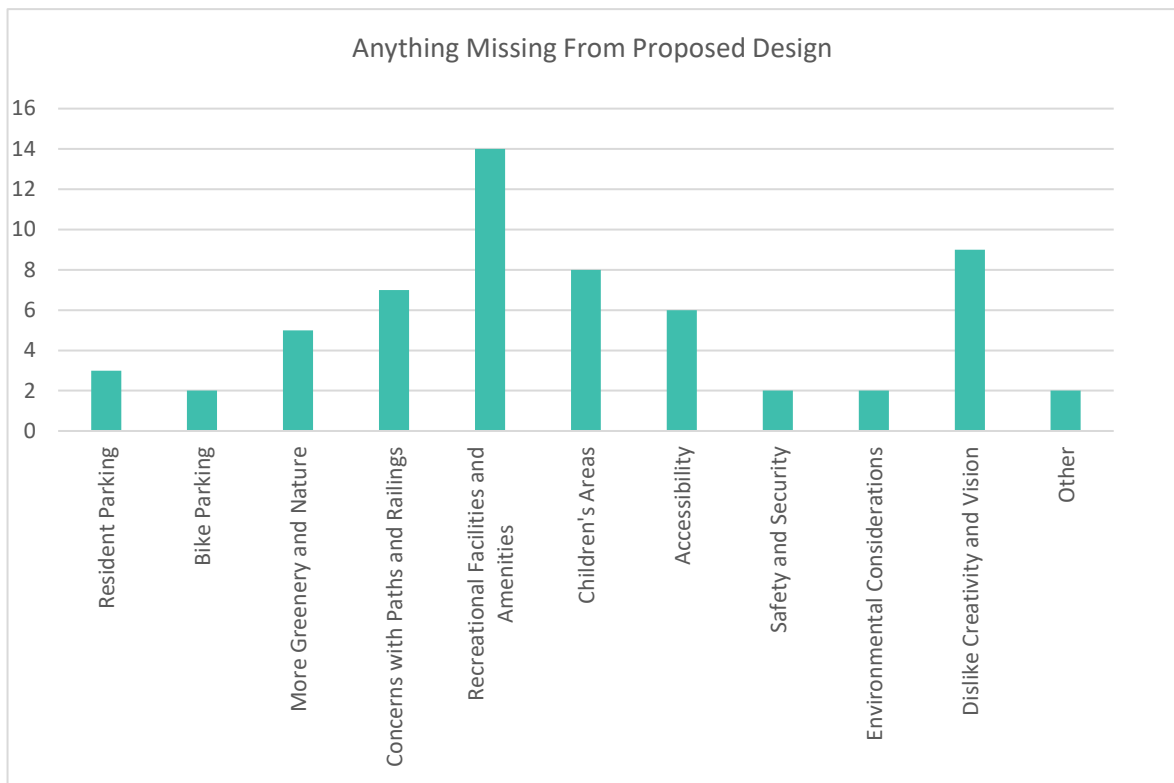
4. What types of spaces do you think should be included in the park? Rank 1 to 5.



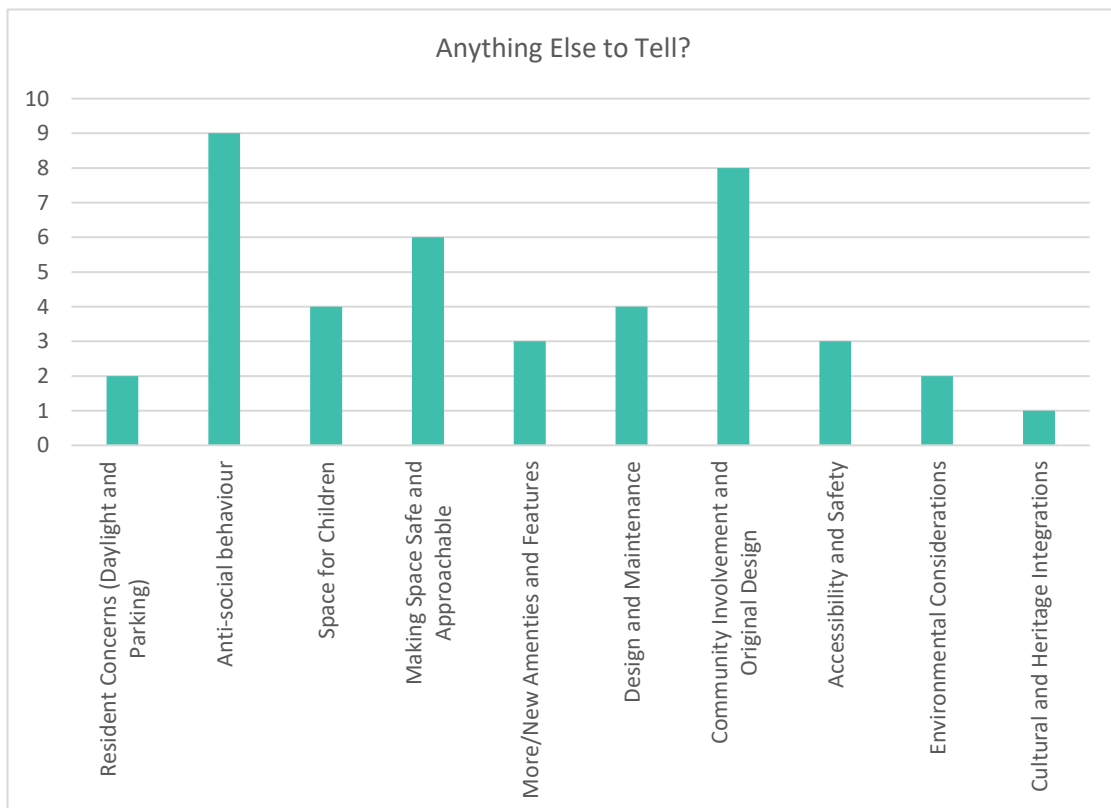
5. What do you like about the proposed design?



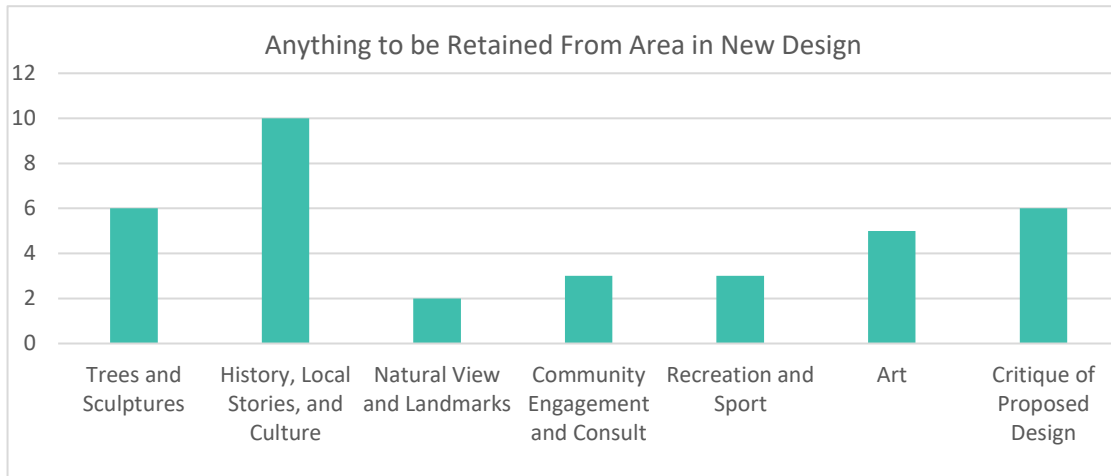
6. Is there anything you feel is missing from the proposed new park design?



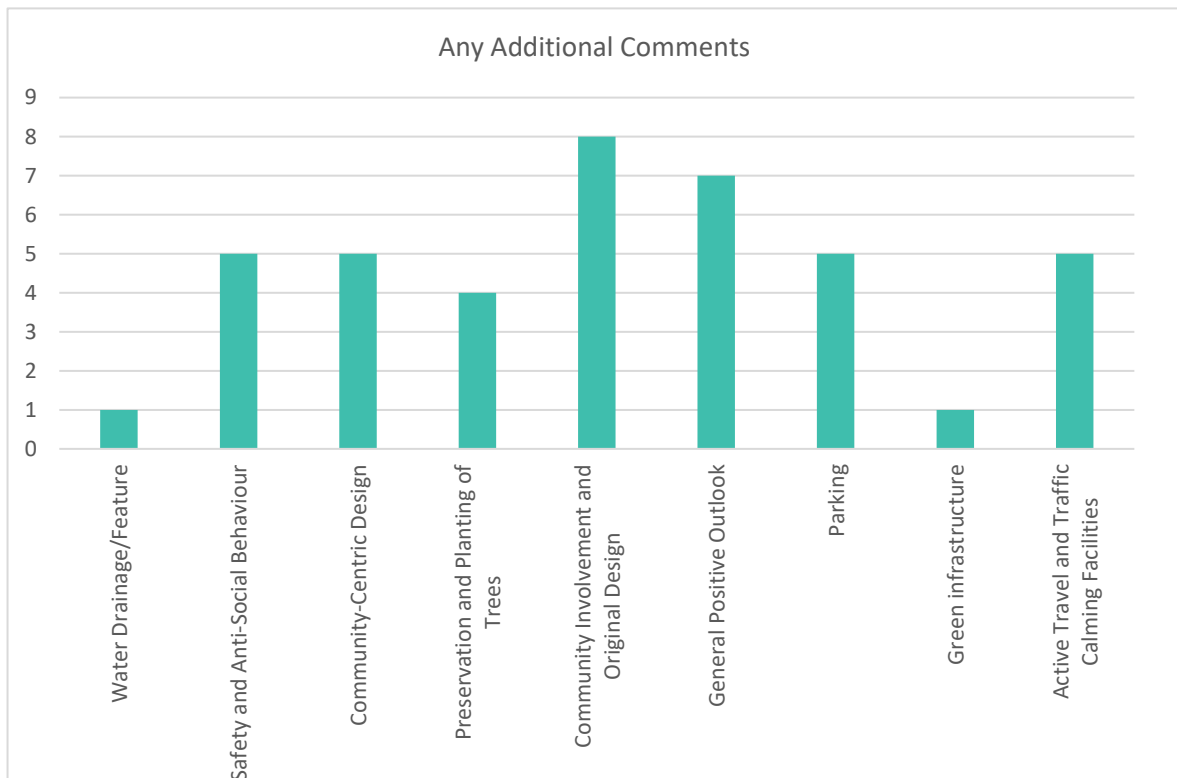
7. Is there anything else you would like to tell us about the Woodquay Park area that you think we should know?



8. Are there any notable features, landmarks, placenames or local heritage that should be retained or reflected in the designs for Woodquay Park?



9. Do you have any additional comments?



2.3

February Consultation Conclusions

The remarkably detailed and varied feedback collected provided the design team with valuable data and understanding from which to assess the iteration of the project. It has also demonstrated that the ongoing effort to ensure community engagement has continued to reap benefits to the overall process. The design team were able to confirm that the design as proposed broadly meets the needs of most stakeholders across the site, but that some revisions were necessary to take account of key issues raised by that community. It was also noted that the Woodquay Residents association retained several concerns about the proposed design. Due to their role in initiating the project, it was determined that further dedicated consultation would be needed with the group following the revision of the initial design.

3.

JUNE CONSULTATION

Following feedback received from the February public consultation regarding the proposed park design, it was determined that a second, more specific and private consultation should occur with the Woodquay Residents Association. This would focus on the design changes which were made as a result of the first consultation, and seek their further input on what works in the new design and what didn't. Following the format of the original consultation, it was decided a live meeting in the Woodquay Rowing Club was the most appropriate way to converse with and understand the needs of residents. Key to the discussion was that since the first consultation, several changes were made to the proposed design based on the feedback given from all consultees including:

- Parking remaining on the opposite side of Corrib Terrace,
- Reduction in hard surfaces,
- A more organic, curved design, similar to the Mary Reynolds design,
- Play mounds, tiered seating, lawn area
- Removal of the drainage rill,
- Provision of hedgerow boundary,
- Retaining access from the Plots to enhance connectivity,
- Use of smaller plant species to maintain site lines, and
- Removal of four trees which are in poor health.

3.1

Consultation Meeting

The meeting was held on Monday the 29th of June 2024 from 12:30-2:30, and members of the Woodquay Residents association were invited to attend. Consultees were presented with A1 paper versions of the updated proposed design and a sheet highlighting changes between each iteration of the design. The design from the original consultation and the original Mary Reynolds design were also made available. The newly presented sheets are available to be viewed in **Appendix 4, and the original sheets can be seen in Appendix 2**. The format of the consultation was an informal round table with residents and members of the design team. Team members from LUC, MKO, and Galway City Council were present to discuss the proposal, and answer questions from the consultees.

Consultees were advised that they should submit their written feedback regarding the proposed design and proposed changes to Galway City Council within 10 days following the meeting, and that in addition verbal feedback from the meeting itself had been noted.

3.2

Feedback Provided

During the meeting itself a number of topics were raised regarding the proposed design. Chief among them was a desire by the residents for the final design to hue as close as possible to the one proposed by Mary Reynolds, and for as many elements of her proposal to be realised in the final one as possible.

- Appreciation of more organic design style,
- Hierarchy of paths, widths of paths, and SuDS measures,
- Further softening of landscaping,
- Concerns about loitering at crossings,
- Inclusion of an ampuitheater on the Waterside,
- Concerns relating to noise and residential amenity at night,
- Ability to close the park at night stemming from concerns about noise,
- Retention of existing trees and planting where possible,
- Desire for creation of a biodiversity friendly park,
- Concerns over the provision of the access path at the Plots,
- Use of the Galway Orb and lighting
- Crossing to Riverside: safety, residential amenity, views, and closing the park,
- Playspace for children,
- Inclusion of surrounding roads within current the project phase, and
- Incorporation of local heritage such as the Standing Stones from the Mary Reynolds Design.

At the close of the meeting, the residents expressed that they would bring back the proposal to those who were not able to attend and would submit feedback at a later stage from the wider group. A summary of the items which were identified by the group are as follows:

- Line of sight through to the Corrib. Desire for oval mound and swapping mound with lawn,
- Provision of amphitheater by Waterside,
- Provision of standing stone feature from Mary Reynolds Design,
- Remain concerned about new access from the Plots to the park,
- Island seating and bench seating seen as positive,
- Request as many trees to be retained as possible, no new trees in park itself, and
- Hedging seen as positive.

Overall, the response to the new design was far more positive, and the elements that consultees expressed concerns about were more detailed than conceptual, compared to the last consultation.

3.3 June Consultation Conclusion

Once again, the dedication and engagement of the local community to delivering the project is identified as being exceptional. The Woodquay residents in particular are driven to see the best outcome possible for the space and the local community. The changes brought forward as a result of the first public consultation resulted in greater buy-in from the residents during the second consultation. Although some elements remained contentious, most of these fell into the category of detailed design. A number of changes were brought about as a result of the consultation, in order to ensure that the needs of residents were met. These include:

- Two additional existing trees retained at the request of the residents,
- Addition of two trees in the Southern portion of the park to mitigate the loss of the two existing trees, and enhance the new public space,
- The retention of the two trees altered the layout of the interface with Waterside. It has allowed the incorporation of only a small amphitheatre area at the interface between park and Corrib,
- Relocation of the mound landform to the larger area of grass and change in shape to reference the Forts mentioned by the resident's group,
- Large rain garden created in the area previously occupied by the mound landform. Takes account of biodiversity requests by residents,
- Introduction of a secondary path within the north of the park, with contrasting surface,
- Paved surface proposed within the wider Woodquay area brought into the Headford Road edge of the park and the triangular parking area, and
- Wayfinding lighting shown within verge alongside path, to minimize trip hazard risk.

However, it is acknowledged that some changes that were sought were not made, due to requirements imposed by policy and design standards, cost, or other considerations. These were not disincluded out of ignorance at the request of residents, but due to the need for the design to meet the requirements of its brief, the need to balance competing spatial interests, and comply with the relevant standards and policies. A few elements that were highlighted by residents, but ultimately not brought forward, are detailed in **Table 3-1** below, along with the reasons for their disinclusion in the final design.

Table 3-1: Elements raised during the second consultation which were not able to be actioned, and the reason why.

Element	Reason for no Change
Retention of the access path at the Plots	This access represents a key linkage to the future Clifden Railway Pedestrian and Cycle Bridge and the Connemara Greenway. The access path enables the best provision of a segregated and safe active travel path to the future bridge. This is in line with the Galway City Development Plan 2023-2029 (Chapter 4.4, 4.8 Obj. 19, and 5.7.1), Cycle Design Manual (Section 2.2), National Cycle Network (Section 6.3 and Corridor 12), and DMURS.

	<p>The concerns regarding residential amenity are noted, however, precedent of providing similar crossings elsewhere in Galway and Ireland has not been shown to increase loitering at the crossing point. Further, the provision of the crossing has been assessed as part of the Road Safety Audit. In addition, modifications were previously made to the design of the crossing at the request of residents to address pedestrian and vehicular safety concerns.</p>
Removal of trees	<p>The desire by residents and other consultees to retain as many mature trees as possible is shared by the design team. The proposed design was progressed with a view of facilitating the retention of the trees in the park. However, several specimens are in poor health and are likely to die within the near future. As a result, it is proposed that to be responsible stewards of the park, minimise disruption to residents and to natural habitats, and ensure the ecological vitality of the new space, that two trees are removed. This is in line with the Tree Preservation Guidelines DOELG (Part III), and the requirements of the Guide for Landowners to Managing Roadside Trees DAFM, and the requirements of the Road Act of 1993 as regards maintain trees in interest of public safety.</p>
Fencing	<p>A fundamental principle of the design for the park was to create an open, inclusive and inviting amenity space which was fully accessible and integrated with its surroundings, including the River Corrib to the north and Woodquay Square to the south. It was determined that the inclusion of fencing and gates would be incompatible with this design objective.</p> <p>The provision of fencing and gates (up to 5m wide) was unnecessary, visually obtrusive, added maintenance challenges, and potentially inhibited the growth of the hedgerow. As the park will not be gated, the provision of overlapping fence and hedgerow was deemed excessive to delineate the border of the space. Additionally, the hedgerow should, on its own, strongly discourage access to the park at places other than designated entrances.</p>
Ampitheater by Waterside	<p>The request of the residents to retain as many trees as possible resulted in the need to redesign this area and ultimately the removal of the ampitheater. Most importantly, the retention of the trees requested by the residents resulted in their root protection areas extending into the ampitheatre area. As a result it became spatially infeasible to accommodate an ampitheater, suitable walking space, and the trees. Further, the ampitheater would need to be sunk into the ground to protect the views of the Corrib from the park, further resulting in impacts to the root protection areas and constraining design options. As a result, it was determined that the area would be redesigned with greater seating, focused on the view of the Corrib. To accommodate the potential for small events or performances, an area has been left on the Headford Road side of the park for a small, temporary events canopy or stage. There is also ample seating provided around it.</p>
Inclusion of Standing Stones	<p>The standing stones proposed as part of the Mary Reynold design were not included in the final design for a number of reasons. The key factor, however, was a lack of suitable space for any stones. On the south side of the park, the visual focus is intended to be on the Galway Orb. Additionally, adequate space for the movement of people, seating, and biodiversity elements were prioritised. Within any lawn or landscaped area, the stones posed maintenance issues for any potential landscape care regime. Further, it was determined they were not consistent with the wider proposed design and style of the upgraded park. Finally, it is highlighted that there are numerous examples (over half a dozen different locations) where standing stones are used as a feature in parks in Galway City. In order create a unique design and personality for the park, it was determined that the inclusion of other elements, such as the Galway Orb, would result in a stronger spatial personality.</p>

4.

DEDICATED CONSULTATION WITH KEY STAKEHOLDERS

It was identified early in the project that dedicated consultations would be necessary with a number of groups as the project progressed. These include the Bus Connects – Cross City Link Team, Access for All, Local Schools, and the Elected Members of Galway City. These groups all stand to be impacted the most by the proposed scheme, or had a strong interest in engaging with the design process to ensure a positive outcome. As a result, a number of dedicated consultations, workshops, and meetings were held which are detailed below.

4.1

Bus Connects - Cross City Link Team

The location of the proposed development in direct proximity to the Bus Connects – Cross City Link scheme is acknowledged, and as been a key consideration of the design team throughout the process. As a result, an initial meeting was held on the 24th of September 2023 with the Cross City Link team (consisting of Galway City Council, the National Transport Authority's Capital Projects Team, and Arup). The options that were under consideration were discussed, and the Woodquay team took onboard these proposals in order to reduce conflict as the design for both progressed. Once the design of Woodquay Park was finalised, an online meeting was held on the 6th of September 2024 to discuss the design prior to lodgement of a planning application. The Cross City Link team expressed no issues with the proposed design for Woodquay Park during this meeting.

4.2

Access for All

A meeting was held between the Galway City Council Recreation and Amenity Department and representatives from Access for All on the 22nd of February 2024. Feedback from the group provided at this meeting indicated that the improved pedestrian facilities and safe crossings were welcomed. The group did identify that the disabled spaces currently present adjacent to the park are used by wheelchair accessible minibuses and vans with a rear access ramp due to the yellow hatched box at the rear of the spaces. Access for All indicated that it was to meet on the 6th of March and provide a formal, coordinated response. However, this response was not issued to the City Council.

The concerns of the group expressed in person were still integrated into the proposed design of the park. Safe pedestrian crossings and high quality pavements form a core part of the scheme. They have been assessed under the Road Safety Audit submitted with this application to ensure the highest level of safety for vulnerable road users. All paths within the park are a minimum of 1.2m wide, with a wider path of 2m wide continuing through the entire park. The two currently present accessible parking spots have been retained and relocated. While it was not possible to provide a large rear-unloading space as is currently present, the parallel parking spaces on Corrib Terrace and Riverside would enable the use of these vehicles in a traffic calmed space, with immediate access to a dropped curb to access the footpath. It is also noted that the parallel parking spaces on Corrib Terrace closest to the pedestrian crossing will have EV chargers, future proofing the spaces. The City Council remains committed to engaging with vulnerable road users on the changes proposed for the space, and the effects on all road users will be assessed as the park is constructed and comes into use.

4.3

Local Schools

A meeting was held online on the 13th June 2023 to provide a dedicated space for local schools to provide commentary on, and ideas for the redesigned park. The design team also sought to gain an understanding of what the park is currently used for by these schools. Representatives from SALI Childcare, Mercy Primary School, and St. Nicholas Parochial School were invited to meet, however the

representative from St. Nicholas was unable to attend. A follow up meeting was offered but was not accepted at the time.

Both schools noted the huge importance of the park as a green space for students, especially during good weather. This was particularly important for both due to limited green space on their own campuses and because many students may not have good access to green areas at home. Both schools use the space to bring nature to their students, including through nature walks, picnic, brain/mindfulness breaks, and as a teaching tool (Ex: the changing of the seasons). They also noted that access to Millenium Park had been improved with the new Salmon Weir Bridge, and the presence of structured play elements in that park meant they did not need to be replicated in Woodquay.

SALI advised that the pre-schoolers loved going when the grass is long, wearing wellies, and getting messy. They also noted that views of the Corrib, and the wildlife on it were important for both recreation and teaching. However, Mercy noted that lower intensity maintenance regime in winters and long grass curtailed their use as many of their students were not able to purchase appropriate footwear. In both cases, however, the schools expressed that as much green space as possible should be created or retained.

The proposed design has sought to balance the needs of the schools. Enhancing the greenspace and views of the Corrib had always been a core tenement of the project, and was reinforced by the feedback from the schools. The difference between the two regarding the long grass and potential for mess was noted. As a result, areas of ground cover which should help reduce mud and provide a place for picnics are proposed, as well as areas which have been left more natural and might be suitable for wellies. In addition, a natural play form will provide an unstrucuted element for children. This has been placed in the centre of the park, so instructors can keep an eye on the limited entrances and exits to the space, with benches at both sides. Finally, the proposed design has ensured that sharp corners, and other hazards for children are eliminated. This includes setting back the Galway Orb within a raised Molina meadow.

4.4 Elected Members

Two dedicated consultations were held for elected members to ensure their inclusion and feedback into the process. A drop-in workshop was held on the 2nd of February 2024 in the Galway City Council Chamber prior to the February public consultation event. Elected members provided verbal feedback at the meeting, which was then fed into the subsequent design team meetings. In addition they were given the opportunity to respond to the survey provided to the general public. An online briefing session was also held on the 10th September 2024 to present the proposed scheme to the elected member prior to the lodgement of this planning application.

5.

OVERALL CONCLUSION

Following the June consultation, the feedback received from the Woodquay residents afterwards, and the dedicated consultations and feedback discussed in Section 4, numerous changes to the design were progressed to action and account for the requests of the local community. The design team is content that the proposed design represents the best balance between stakeholder feedback, the design brief, relevant policy and guidance, budget, and space constraints. The design presented within the planning application represents the end result of a detailed iterative design process, which was strongly influenced by the public consultation process. Where a desire for changes to the design were expressed by the public, these were sought to be accommodated as far as was safely, technically, and spatially possible while complying with the requirements of the project funding and all other standards and guidance. It is submitted that the proposed design represents the best and most fair balance of these competing interests, is the result of a long and robust consultation process, and is in line with the proper planning and sustainable development of the Woodquay neighbourhood and Galway City.



APPENDIX 1

**COPY OF ADVERTISEMENTS FOR
FEBRUARY CONSULTATION**



**Comhairle Cathrach
na Gaillimhe**
Galway City Council

**Halla na Cathrach, Bóthar an Choláiste, Gaillimh. H91 X4K8 •
City Hall, College Road, Galway. H91 X4K8
091-536400 • customerservice@galwaycity.ie
www.galwaycity.ie @GalwayCityCo
www.facebook.com/GalwayCityCouncil/**

AINM DO DHROICHEAD CHORA NA MBRADÁN AGUS D'IONAD SPÓIRT ILÚSÁIDE WESTSIDE

A NAME FOR THE SALMON WEIR PEDESTRIAN AND CYCLE BRIDGE AND THE MULTI-USE GAMES AREA IN WESTSIDE

Tá an Coiste Ainmnithe agus Cuimhneacháin Cathartha nua ag lorg moltaí maidir le hainm a chur ar Dhroichead Chora na mBradán do Choisithe agus do Rothaithe agus ar an Ionad Spóirt Ilúsáide Westside i gcóngar d'Óstán an Glenoaks.

Galway City Council invites applications for the naming of the Salmon Weir Pedestrian and Cycle Bridge and the Multi-use Games Area in Westside adjacent to the Glen Oaks.

Tá an próiseas iarratais ar oscailt anois leis an bpolasaí agus foirmeacha iarratais ar fáil ag <https://www.galwaycity.ie/beartas-ainmnithe/> nó tríd an gcód QR thíos a scanadh

The Policy and Application form are available online at the links below.
Applications at <https://www.galwaycity.ie/civic-naming> or by scanning the QR code below and the application process will remain open until 6:00pm Sunday February 11, 2024.

Sprioc: 6:00i.n. Dé Domhnaigh an 11 Feabhra 2024

More information on the bridge can be found at <https://www.galwaycity.ie/salmon-weir-pedestrian-cycle-bridge>. Telephone: (091) 536400

Tuilleadh: <https://www.galwaycity.ie/droichead-chora-bradan-coisithe-rothaithe>
Teileafón: (091) 536400



SCÉIM NA NDEONTAS CONLÁISTE 2024

AMENITY GRANTS SCHEME 2024

Is é an cuspóir atá le Scéim na nDeontas Conláiste ná cuidiú le Scéimeanna Gairdíní Pobail/Cuibhreann agus le Cumainn Cónaitheoirí ar mian leo lámh a bheith acu i gcur chun cinn a dtimpeallachta áitiúla trí thabhairt faoi oibreacha feabhsúcháin ina gceantar áitiúil, lena n-áirítear bruscar a ghlanadh suas agus bearta frithbhruscair.

The objective of the Amenity Grants Scheme is to assist Community Gardens/Allotment Schemes and Residents Associations who wish to contribute towards the betterment of their local environment by undertaking improvement works in their local area, including litter clean-ups and anti-litter measures.

Imeachta maidir le hiarratais 2024:

Ní mór gach iarratas ar scéim 2024 a líonadh go leictreonach. Tabhair cuairt ar <https://www.galwaycity.ie/deontais-conlaiste>

Application procedure 2024:

All applications for the 2024 scheme must be completed electronically by visiting www.galwaycity.ie/amenity-grants

Ba cheart iarratais chomhlánaithe a chur isteach tráth nach déanaí ná 4:00pm, Dé hAoine, an 29th Márta.

Completed applications should be submitted no later than the closing date of 4:00pm Friday 29th March.

Má theastaíonn tuilleadh eolais uait seol ríomhphost chuig environment@galwaycity.ie nó tabhair cuairt ar www.galwaycity.ie/deontais-conlaiste

For more information email environment@galwaycity.ie or visit www.galwaycity.ie/amenity-grants

ATHFHORBAIRT PHÁIRC BHARR AN CHALAIHD IMEACHT COMHAIRLIÚCHÁIN PHOIBLÍ

WOODQUAY PARK REDEVELOPMENT PUBLIC CONSULTATION EVENT

Tá áthas ar Chomhairle Cathrach na Gaillimhe athfhorbairt Pháirc Bharr an Chalaídh i lár chathair na Gaillimhe a fhógairt, chun spás glas inrochtana, poiblí a chruthú, ina mbeidh plandú atá neamhdhiobhálach don bhiathéagsúlacht, cosáin a mbeidh aois agus soghluaisteacht oiriúnach, agus spásanna le haghaidh súgartha agus scithe. Beidh uasghrádú moillú tráchtá i gceist leis an tionscadal freisin agus saoráidí coisithe feabhsaithe ar na sráideanna mórthimpeall.

Galway City Council is pleased to announce the redevelopment of Woodquay Park in Galway city centre, to create an accessible, public, green space, with biodiversity-friendly planting, age and mobility-friendly pathways, and spaces for play and for rest. The project will also involve traffic calming upgrades and improved pedestrian facilities to the surrounding streets.

Beidh imeacht comhairliúcháin phoiblí chun an plean molta a thabhairt isteach, agus chun d'aiseolas a chloisteáil, ar siúl ar an Máirt 6ú Feabhra idir 1:00pm agus 4:30pm i gCumann Rámhaíochta na Gaillimhe, Cois Abhann, Barr an Chalaídh, Gaillimh (H91 K072)

A public consultation event to introduce the proposed plan, and to hear your feedback, will take place on Tuesday 6th February between 1:00pm and 4:30pm in Galway Rowing Club, Riverside, Woodquay, Galway (H91 K072)

Tugtar cuireadh do bhaill den phobal, lena n-áirítear cónaitheoirí áitiúla, úinéirí gnó agus baill de phobal Bharr an Chalaídh, a bheith i láthair. Deis é seo chun na líniocthaí coincheapa tosaigh a fheiceáil, na pleananna a phlé agus ceisteanna a chur, agus aiseolas a roinnt leis an bhfoireann deartha. Beidh pleananna tionscadail ar taispeáint, le tuilleadh eolais ar fáil freisin ar stair agus amlíne réamh-mheasta na hathfhorbartha.

Members of the public, including local residents, business owners and members of the Woodquay community, are invited to attend. This is a chance to see the initial concept drawings, to discuss the plans and ask questions, and to share feedback with the design team. Project plans will be on display, with more information also available on the history and projected timeline of the redevelopment.

Cuirfear an fhaisnéis seo ar fáil freisin ar ár suíomh gréasáin ag www.GalwayCity.ie/WoodquayPark ó Dé Céadaoin 7ú Feabhra 2024.

This information will also be made available on our website at www.GalwayCity.ie/WoodquayPark from Wednesday 7th February 2024. Feedback is welcome at the consultation event, or by email, post, or online by close of business on Friday 1st March 2024.

Fáiltítear roimh aiseolas ag an imeacht chomhairliúcháin, nó trí ríomhphost, tríd an bpost, nó ar líne faoi am dúnta gnó Dé hAoine 1ú Márta 2024.

Share feedback:
• Online at www.GalwayCity.ie/WoodquayPark
• By email to parks.department@galwaycity.ie
• By post to

Roinn aiseolas:

- Ar líne ag www.GalwayCity.ie/WoodquayPark
- Trí ríomhphost chuig parks.department@galwaycity.ie
- Tríd an bpost chuig

Recreation & Amenity Department,
Galway City Council,
City Hall,
College Road,
Galway,
H91 X4K8

An Roinn Caitheamh Aimsire agus Conláiste,
Comhairle Cathrach na Gaillimhe,
Halla na Cathrach,
Bóthar an Choláiste,
Gaillimh,
H91 X4K8



Latest News

You are here: News

Woodquay Park Redevelopment

Tue 6 Feb, 2024 Community Culture News



The concept design for the park, titled 'Islands & River', references the origin of the Woodquay area, an inlet bounded by two islands, Horse Island and St Stephen's Island. It also references the multiple islands found within the wider Lough Corrib and the role of Woodquay as the gateway to Corrib country.

Included in the plans is the creation of accessible, public, green space, with biodiversity-friendly planting, age and mobility-friendly pathways, sheltered seating niches and spaces for play and for rest. The project will also involve traffic calming upgrades and improved pedestrian facilities to the surrounding streets.

Galway City Council is delivering the project in conjunction with Fáilte Ireland who is providing funding under the Urban Animation Scheme.

A planning application will be submitted to An Bord Pleanála, in accordance with Part XAB of the Planning and Development Act 2000 (as amended) in the coming months with construction anticipated to commence in early 2025 subject to grant of permission.

Galway City Council is encouraging as many people as possible to make a submission and have their say on a project which aims to breathe new life into a hidden gem in the heart of the city.

Project plans are on display in City Hall and in Woodquay Park itself, providing more information about the proposed redevelopment. This information is also available at www.GalwayCity.ie/WoodquayPark (<http://www.GalwayCity.ie/WoodquayPark>) from Wednesday 7th February 2024.

Feedback is welcome by email, post, or online by close of business on Friday 1st March 2024.

Share feedback:

- Online [here](https://consult.galwaycity.ie/en/content/woodquay-park-public-realm-enhancements) (<https://consult.galwaycity.ie/en/content/woodquay-park-public-realm-enhancements>) · By email to parks.department@galwaycity.ie (<mailto:parks.department@galwaycity.ie>)
- By post to

Recreation & Amenity Department,
Galway City Council,
City Hall,
College Road,
Galway,
H91 X4K8

[Back to Latest News \(/latestnews\)](#)

Useful links

- [Online Planning Documents](https://www.galwaycity.ie/online-planning-system) (<https://www.galwaycity.ie/online-planning-system>)
- [Parking Fines](https://www.galwaycity.ie/parking-fines-3) (<https://www.galwaycity.ie/parking-fines-3>)
- [Register of Electors](https://www.galwaycity.ie/register-of-electors) (<https://www.galwaycity.ie/register-of-electors>)
- [Bulky Goods Collection](https://www.galwaycity.ie/bulky-goods-collection-2) (<https://www.galwaycity.ie/bulky-goods-collection-2>)
- [Housing Loans/Rents](https://www.galwaycity.ie/housing-rents) (<https://www.galwaycity.ie/housing-rents>)
- [Water Issues](https://www.galwaycity.ie/water) (<https://www.galwaycity.ie/water>)
- [Housing Maintenance](https://www.galwaycity.ie/housing-maintenance) (<https://www.galwaycity.ie/housing-maintenance>)
- [Road Maintenance](https://www.galwaycity.ie/road-maintenance) (<https://www.galwaycity.ie/road-maintenance>)

Useful links

- [Press](https://www.galwaycity.ie/latestnews) (<https://www.galwaycity.ie/latestnews>)
- [Jobs & careers](https://www.galwaycity.ie/human-resources) (<https://www.galwaycity.ie/human-resources>)
- [Privacy policy](https://www.galwaycity.ie/privacy-policy) (<https://www.galwaycity.ie/privacy-policy>)
- [Cookies](https://www.galwaycity.ie/cookie-declaration) (<https://www.galwaycity.ie/cookie-declaration>)
- [Freedom of information](https://www.galwaycity.ie/freedom-of-information) (<https://www.galwaycity.ie/freedom-of-information>)
- [Accessibility](https://www.galwaycity.ie/accessibility) (<https://www.galwaycity.ie/accessibility>)
- [Site map](https://www.galwaycity.ie/sitemap) (<https://www.galwaycity.ie/sitemap>)

Contact

Galway City Council,
City Hall, College Road,
Galway,
H91 X4K8.

Email: customerservice@galwaycity.ie (<mailto:customerservice@galwaycity.ie>)

Rphost: seirbhisdochustaimairi@galwaycity.ie (<mailto:seirbhisdochustaimairi@galwaycity.ie>)

Media Queries: communications@galwaycity.ie (<mailto:communications@galwaycity.ie>)

Phone: +353 91 536400

Fax: +353 91 567493

(<https://www.facebook.com/galwaycitycouncil>) (<https://www.twitter.com/galwaycityco>)
(<mailto:customerservice@galwaycity.ie>)



Woodquay Park Public Realm Enhancements

CLOSED 📅 6 Feb, 2024, 1:00pm - 1 Mar, 2024, 11:59pm

Woodquay Park Public Realm Enhancements



Welcome to the Woodquay Park Enhancement Project Public Consultation Feedback Survey, which is being carried out by Galway City Council, in tandem with LUC, MKO, Punch, Tobar, ACP, Edward Cotter Partnership and Failte Ireland.



As part of the early design process, we want to engage with the wider community to understand your thoughts on the proposed design of your park. We appreciate your inputs and feedback on the proposed designs. Please find the details of the proposed designs here:

Woodquay Park Public Realm Enhancements

(/sites/default/files/uploads/webform/1623/Woodquay%20Park%20Consultation%20Boards.pdf)

Thank you for taking the time to complete the survey. We very much appreciate your help and support. We would appreciate if you would provide your feedback by **1st March 2024.**

The closing date has passed and submissions are no longer being accepted.

Contact

[CONTACT US\(/EN/CONTACT\)](/en/contact)

More

[MODERATION POLICY\(/EN/CONTENT/MODERATION-AND-TAKE-DOWN-POLICY\)](/en/content/moderation-and-take-down-policy)

[PRIVACY POLICY\(/EN/CONTENT/PRIVACY-STATEMENT\)](/en/content/privacy-statement)

[COOKIE POLICY\(/EN/CONTENT/COOKIE-POLICY\)](/en/content/cookie-policy)

[TERMS AND CONDITIONS\(/EN/CONTENT/TERMS-AND-CONDITIONS\)](/en/content/terms-and-conditions)





Post



Galway City Council
@GalwayCityCo

[Follow](#)

Woodquay Park Redevelopment Public
Consultation Event:
Tuesday 6 February
1pm-4:30pm
Galway Rowing Club

This is a chance to see the initial concept drawings, to discuss the plans and ask questions, and to share feedback with the design team.

Feedback welcome by 1 March 2024.



2:21 PM · 02 Feb 24 · **1,613** Views

Post your reply



**Galway City Council**

February 6 · 🌐



Woodquay Park Redevelopment Public Consultation Event Today!

Tuesday 6 February

1:00pm - 4:30pm

Galway Rowing Club

Galway City Council is pleased to announce the redevelopment of Woodquay Park in Galway city centre, to create an accessible, public, green space, with biodiversity-friendly planting, age and mobility-friendly pathways, and spaces for play and for rest.

The project will also involve traffic calming upgrades and improved pedestrian facilities to the surrounding streets.

A public consultation event to introduce the proposed plan, and to hear your feedback, will take place:

on Tuesday 6 February

between 1:00pm and 4:30pm

in Galway Rowing Club, Riverside, Woodquay, Galway (H91 K072)

Members of the public, including local residents, business owners and members of the Woodquay community, are invited to attend.

This is a chance to see the initial concept drawings, to discuss the plans and ask questions, and to share feedback with the design team.

Project plans will be on display, with more information also available on the history and projected timeline of the redevelopment.

This information will also be made available on our website at www.GalwayCity.ie/WoodquayPark from Wednesday 7 February 2024.

Feedback is welcome at the consultation event, or by email, post, or online by close of business on Friday 1 March 2024.

Share feedback:

- Online at www.GalwayCity.ie/WoodquayPark
- By email to Parks.Department@GalwayCity.ie
- By post to

Recreation and Amenity Department,
Galway City Council,
City Hall,
College Road,
Galway,
H91 X4K8

Log in or sign up for Facebook to connect with friends, fam...

Log In

or

Create new account

 11

1 comment 3 shares

 Like Comment

Most relevant ▼



Sarah Conneely

Presume the design follows engagement with the neighbourhood, and this consultation is at the preliminary concept stage, open to potential viable improvements as suggested by the invitees.

12w

 2

Log in or sign up for Facebook to connect with friends, fam...

Log In

or

Create new account

**Galway City Council**

February 4 · 🌐

**Woodquay Park Redevelopment Public Consultation Event**

Tuesday 6 February

1:00pm - 4:30pm

Galway Rowing Club

Galway City Council is pleased to announce the redevelopment of Woodquay Park in Galway city centre, to create an accessible, public, green space, with biodiversity-friendly planting, age and mobility-friendly pathways, and spaces for play and for rest.

The project will also involve traffic calming upgrades and improved pedestrian facilities to the surrounding streets.

A public consultation event to introduce the proposed plan, and to hear your feedback, will take place:

on Tuesday 6 February

between 1:00pm and 4:30pm

in Galway Rowing Club, Riverside, Woodquay, Galway (H91 K072)

Members of the public, including local residents, business owners and members of the Woodquay community, are invited to attend.

This is a chance to see the initial concept drawings, to discuss the plans and ask questions, and to share feedback with the design team.

Project plans will be on display, with more information also available on the history and projected timeline of the redevelopment.

This information will also be made available on our website at www.GalwayCity.ie/WoodquayPark from Wednesday 7 February 2024.

Feedback is welcome at the consultation event, or by email, post, or online by close of business on Friday 1 March 2024.

Share feedback:

- Online at www.GalwayCity.ie/WoodquayPark
- By email to Parks.Department@GalwayCity.ie
- By post to

Recreation and Amenity Department,
Galway City Council,
City Hall,
College Road,
Galway,
H91 X4K8

Log in or sign up for Facebook to connect with friends, fam...

Log In

or

Create new account

 30

9 comments 6 shares

 Like Comment

Most relevant ▼



Sean Burke

Yes Eyre Sq was fab lookin olden times and they made an absolute BA_LS of it

12w

 2

Log in or sign up for Facebook to connect with friends, fam...

Log In

or

Create new account



APPENDIX 2

FEBRUARY CONSULTATION DISPLAY BOARDS

The Project

Woodquay Park is a small secluded park, located close to the centre of the City and adjacent to the River Corrib. The area was originally made up of three islands, with an inlet extending between them. This was subsequently developed as a quayside, attracting commercial traffic down the river. Woodquay is believed to be one of the earliest inhabited parts of Galway.

The park was created in the twentieth century following the infill of the quayside. Today it is a small quiet, relatively unknown park, consisting of a fenced grassed area with many mature trees. It provides a green oasis, close to the centre and is valued by the local residents and neighbouring schools, who use it as a learning resource and natural play area.

The park has suffered in the past from anti-social behaviour, which creates disturbance to local residents. We want to unlock the potential of this park, enhance its amenity and biodiversity, putting forward a wide range of offerings to all ages and interest groups to encourage use by the public and local community.

The aims of the project:

- To develop Woodquay Park as a high-quality and sustainable public park to serve the local residents and visitors to Galway
- To develop aesthetically pleasing and functional spaces while protecting and enhancing heritage features, views and site characteristics in a manner that will facilitate sustainable maintenance.
- To strike a balance between the heritage, people and wildlife while also providing opportunities for active and passive recreation and better connecting the park with the Corrib.
- To ensure there is uniformity and legibility throughout the park with the use of appropriate park furniture, lighting, signage, etc.
- To provide safe and secure access to the park for pedestrians by the development of better access points and necessary upgrades on the surrounding roads and footpaths.
- To provide opportunities for informal and / or formal play and entertainment

Project Timeline

- 2017 - The project was initiated by the Woodquay Residents Association. The group were keen to develop a project that would reignite community spirit and foster a common purpose through the creation of an open community space. Their mission was to create 'eyes on the street' to combat anti-social behaviour.
- 2018 - The group worked with garden designer Mary Reynolds to come up with an initial concept design for the park. The aim was to reconnect the river to the park and open up views. The design was inspired by the River Corrib.
- 2021 - Galway City Council became involved with the scheme. They reviewed the concept proposals and were responsible for a successful bid to Fáilte Ireland's 'Urban Animation Capital Investment Scheme'. The criteria of the funding states that projects should focus on provision of public art, installations and animation spaces.
- 2022 - Galway City Council undertook a competitive tender process to appoint a multi-disciplinary design team to deliver the proposals.
- 2023 - A team led by LUC were appointed. The concept proposals were reviewed and further technical survey and analysis undertaken to identify any constraints to implementation of the original design and other opportunities that could be explored. A meeting was held with local schools and childcare providers to understand how they used the park.
- 2024 - The concept design was developed further, taking on board Galway City Council's aspiration to unite the park with the surrounding streets.
- February 2024 - Engagement will be undertaken with the surrounding community and park users to understand what they think of the proposals. Feedback received will be fed back into the design process.
- Spring 2024 - A Part 10 planning submission will be made to An Bord Pleanála.
- Autumn 2024 - The project will be tendered to identify a suitable contractor to implement the works.
- Early 2025 - The project will start on site. Implementation will take around 10 months (late 2025).

Project Team



Galway City Council is the client for the project. They are the landowners and are responsible for the park's management and maintenance. They have secured funding for the project and will be responsible for delivery of the project.



Fáilte Ireland are the primary source of funding for the project. The changes will be funded through their 'Urban Animation Capital Investment Scheme'. This is aimed at supporting sustainable tourism development through public realm and urban animation projects that have the potential to transform and re-imagine urban centres for visitors and communities.



LUC are acting as lead consultant and landscape architect for the project. Initial survey and analysis was undertaken in summer 2023. They are responsible for the developed design proposals, supported by other professionals.



MKO are providing planning and ecology services for the project. A baseline ecological survey was undertaken in Summer 2023.



PUNCH are providing civil, structural engineering and hydrological services for the project.



ACP are providing heritage services for the project. A baseline heritage survey was undertaken in Summer 2023.



Tobar are providing archaeological services for the project. A baseline archaeological survey was undertaken in Summer 2023.



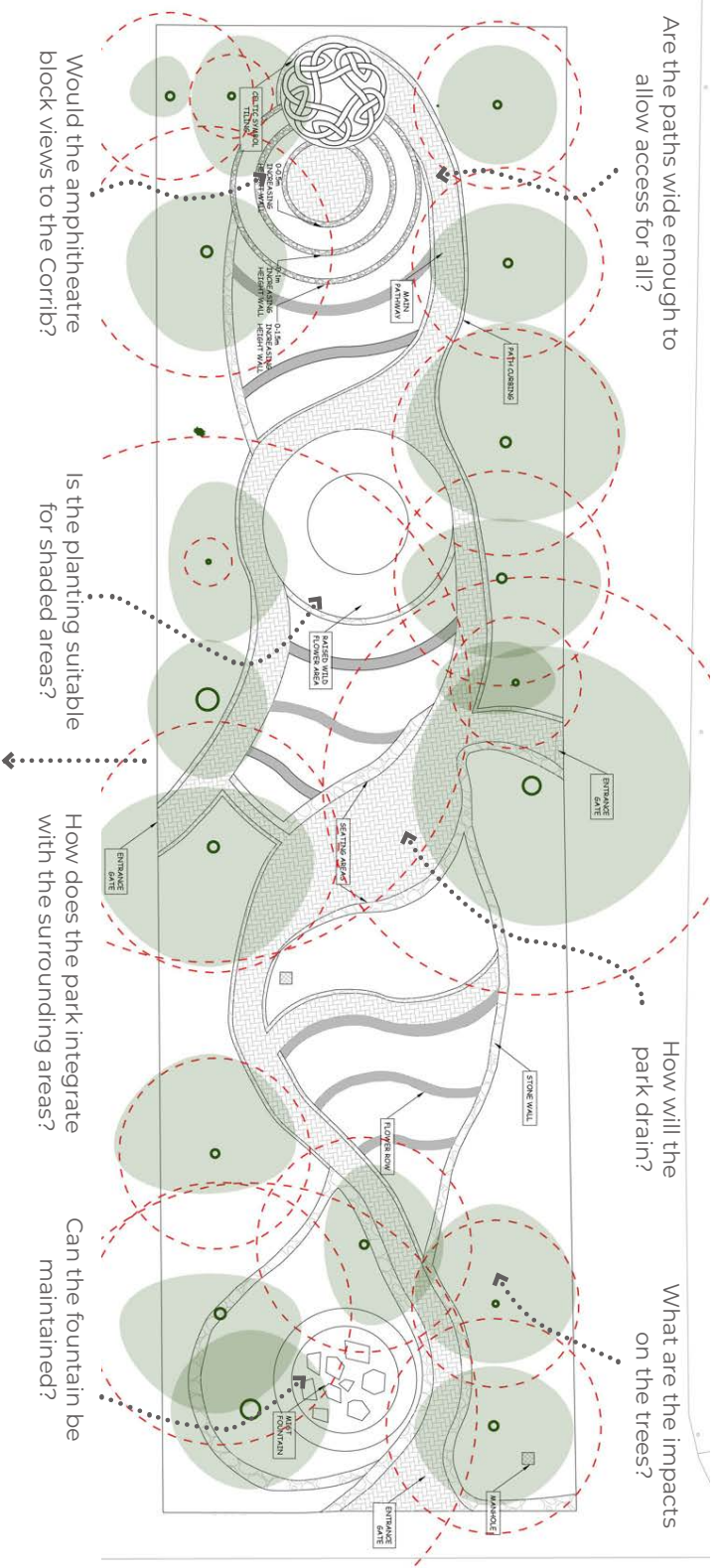
Edward Cotter Partnership are providing quantity surveying services for the project

Project Site

Woodquay Park



Original concept plan (initiated by the Woodquay Residents Association)



Woodquay Park

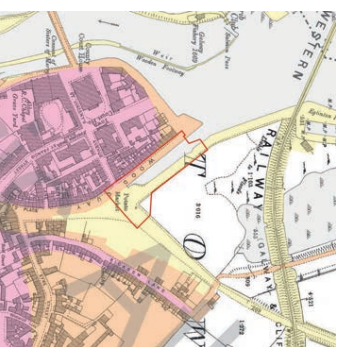
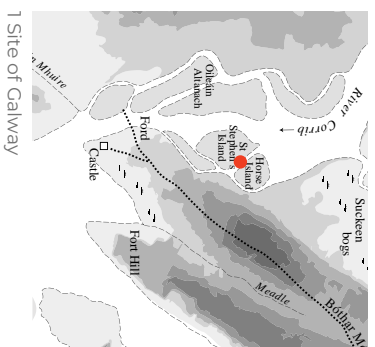
Key themes

- 'Eyes on the Street'
- An open community space
- Discrete performance areas
- Visual reference to the Corrib and its islands
- Weaving paths
- Diversified planting
- Seating edges
- Playable landscapes
- Incorporation of water through the space

Why change the proposals?

- An opportunity to enhance the wider area by extending the site boundary. This will include the car parking area to the south, Corrib Terrace, Riverside and Waterside.
- An opportunity to respond to other initiatives in the local area.
- An opportunity to identify how others use the park and discover what they might want from the space.
- The design must respond to any constraints identified through recent surveys and studies, in particular the existing mature trees and ecology associated with the site and proximity to the Corrib.
- The design must respond to the climate crisis; for example, the inclusion of Sustainable Urban Drainage (SuDS), planting in line with the All Ireland Pollinators Plan.
- The design must meet the requirements of the primary funding source; Fáilte Ireland Urban Animation Scheme.
- The design must consider future maintenance regimes and budgets.

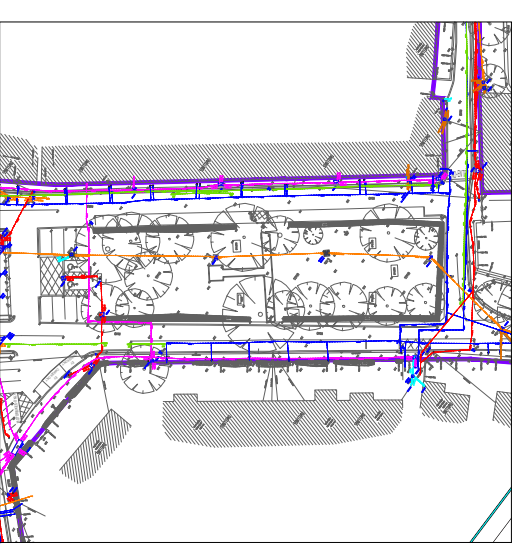
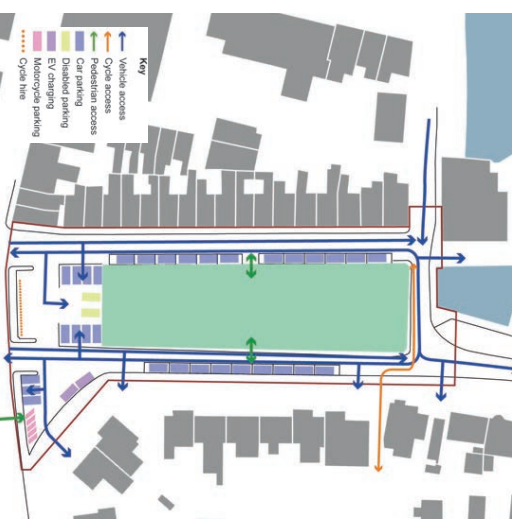
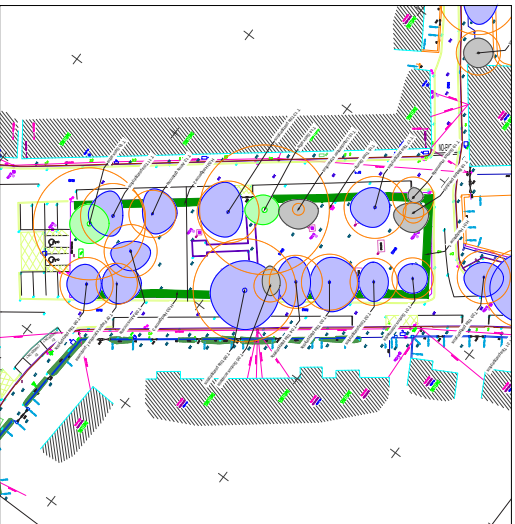
Site Constraints



- The proposed site largely comprises reclaimed ground and a culverted river channel, and these works may have disturbed earlier archaeological deposits from the medieval period.
- The site is partially located within the Zone of Notification for the historic town of Galway, however no element of Galway's town defences are located on or in the immediate vicinity of the site.
- The site is not a protected structure and there are none in the immediate vicinity of the park
- There is a small memorial plaque for the Irish Countrywomen's Association, 1910-1985. This will be retained and relocated.
- The site lies adjacent the Lough Corrib Special Area of Conservation, close to the Inner Galway Special Protection Area and Galway Bay Complex Special Area of Conservation. Site Investigations within the Proposed Development site. Report to be submitted to relevant authorities.



Site Survey and Analysis - Key Findings



Trees

- A Tree Survey was undertaken in summer 2023. This identified the quality of the trees and their suitability for retention.
- There are eighteen trees within the park. These are planted in two rows and define the edge of the park. A Grey Alder, at the centre, interrupts views to the riverside.
- Species include Large leaved Lime, White Willow, Common Alder, London Plane, Swedish Whitebeam, Rowan, Purple Beech, Sycamore, Silver Birch, Grey Alder and Liquidambar.
- Two White Willows (Grade A trees) require ongoing pruning to ensure they do not become too large for the space.
- A Rowan, Liquidambar, Silver Birch and Swedish Whitebeam are classed as Grade C.
- All other trees within the park are categorised as Grade B, with no significant defects.
- A calculation of their rooting area was made; this has informed the design layout.

Ecology

- A baseline ecological survey was undertaken in summer 2023.
- The site is located within an area of high groundwater vulnerability, within the same hydrological sub-catchment as the Lough Corrib Special Area of Conservation.
- Proposals should avoid indirect impacts on the important habitats and species through deterioration of water quality.
- Trees to the east and west margins have been identified as having low to moderate roosting potential for bats. A more detailed Bat survey will be commissioned during the survey window.

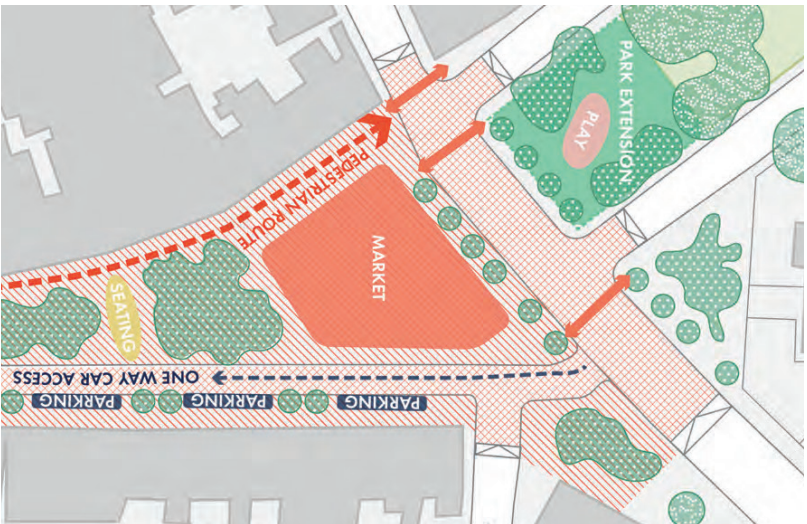
Access and Parking

- Two way access to Corrib Terrace and Riverside but width is restricted (2.6-4.3m).
- Coach operators use Riverside as entry and exit route from the dock at Steamer's Quay.
- 12 metered parking spaces are provided on Corrib Terrace and 9 on Riverside.
- 43 residents permits have been issued for Zone 8 including Corrib Terrace, Waterside and Riverside. 35 Park and Stride permits have been issued to parents/carers.
- 8 parking spaces and 2 disabled spaces are provided to the south of the park. 2 standard spaces, 2 spaces for EV charging and 5 motorcycle spaces are located at the end of Riverside.
- Driveway access is required at three locations on Riverside.
- A cycle hire station comprising 20 stands is located to the south of the park.
- The school cycle bus passes the northern end of the park.

Utilities and Drainage

- A ground-penetrating radar survey was undertaken in Summer 2023.
- Further CCTV surveys, ground infiltration tests and site investigation will take place in Spring 2024.
- The site is not at risk from coastal or river flooding and does not form part of the Galway City Flood Relief Scheme.
- Galway City Council will require use of nature-based drainage solutions, such as permeable paving and bioretention areas.

Other Initiatives



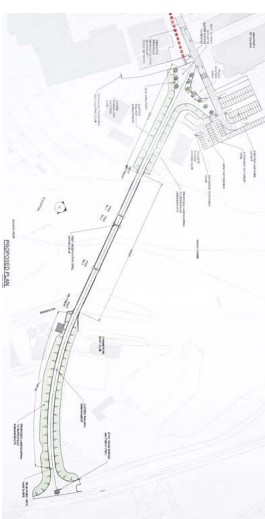
Galway Public Realm Strategy

- Woodquay Square, is identified as a 'Key Public Realm Space'.
- Priorities include removing car parking, aligning the street to the east, and creating a large area for lively markets or events.
- Immediately to the south of the Park, existing parking is identified as a 'Microspace', an extension to the Park, possibly incorporating an element of play.
- The strategy suggests the inclusion of artwork at the southern end of Woodquay Square to create a visual marker.



Galway Cross-City Bus Link

- An east-west public transport route for buses, cyclists and pedestrians.
- South of Headford Road, car parking will be removed to create extensive public realm.
- A raised 'shared surface' is shown linking Woodquay Square to Woodquay Park.
- New cycle stands, planting and street trees will be incorporated along Headford Road.
- Waterside will be closed to traffic and vehicles diverted via Courthouse Square.
- Court Avenue will remain as a one way street.



Clifden Railway Pedestrian and Cycle Bridge

- These proposals seek to re-use the surviving pillars of the old Clifden Railway Bridge to create a new pedestrian / cycling bridge over the River Corrib, as part of the Galway to Clifden Greenway. This will provide a direct connection between the University of Galway and the Woodquay area.

Woodquay Park



Galway Orb

- To celebrate Galway 2020 European Capital of Culture a fire parade was held across seven towns, using decorative spheres.
- Each sphere reflects the celebrations and memories of the towns with silhouettes of landscape and people. Every town has a river and each sphere illustrates the river along its base. These spheres (or orbs) were designed with the intention of being used as permanent art installations in their respective towns.
- Ballinasloe has recently installed its orb in a permanent setting within the town.

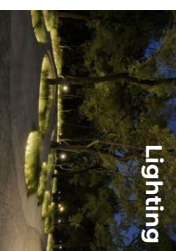
Developed Concept Design



'Eyes on the Street'

The Corrib

Animation



Design Themes

Woodquay Park

Proposed changes

- 1 Two way access would be maintained to Riverside.
- 2 One way access would be created to Corrib Terrace.
- 3 9 metered parking spaces would be maintained on Riverside.
- 4 12 metered parking spaces would be maintained on Corrib Terrace.
- 5 Corrib Terrace would be designed as a 'Home Zone'; this prioritises pedestrian movement and will promote life on the streets.
- 6 Parking spaces on Corrib Terrace would be interspersed with areas of planting and both the footpath and road surface would be paved.
- 7 Paving would continue to the end of the park at Waterside, to improve physical and visual connection to the Corrib.
- 8 2 disabled space, 2 spaces for EV charging and 5 motorcycle spaces would be retained within a reconfigured area on Riverside.
- 9 10 parking spaces would be lost adjacent Headford Road, which becomes part of the park.
- 10 Cycle hire station to be relocated to this area.
- 11 3 trees would be removed. One Grey Alder would be removed from the centre of the park, to open up views to the river. One Swedish Whitebeam and one Silver Birch would be removed from the Waterside end of the park. The Birch is near the end of its lifespan and the Whitebeam is growing within the hedge.
- 12 12 new trees will be planted
- 13 Seating would be provided to the edges of the park and in clusters within the park, catering to a range of users.
- 14 Mounded landform would be created, to reference the islands in the Corrib. These could be used for play.
- 15 Rain gardens would be introduced to provide sustainable drainage. These would include biodiverse planting and informal pathways.
- 16 The Galway Orb would be installed adjacent Headford Road, to create a focal point to draw people into the park. A rill feature within the paving would meander from the Orb and through the park, leading people to the riverside.
- 17 Paved areas would be located away from mature trees to minimise disturbance to their roots.
- 18 Additional crossing points into the park will be created to increase permeability.

Artist's Impression

Woodquay Park





APPENDIX 3

FEBRUARY COMMUNITY CONSULTATION SURVEY



Woodquay Park Public Realm Enhancements

Public Consultation Survey

Welcome to the Woodquay Park Enhancement Project Public Consultation Feedback Survey, which is being carried out by Galway City Council, in tandem with LUC, MKO, Punch, Tobar, ACP, Edward Cotter Partnership and Failte Ireland.

As part of the design process, we want to engage with the wider community to understand your thoughts on the proposed design of your park. We appreciate your inputs and feedback on the proposed designs.

Thank you for taking the time to complete the survey. We very much appreciate your help and support.

Paper Surveys can be dropped in/posted to Galway City Council, City Hall, College Road, Galway, H91 X4K8.

A link to this survey online can be found here: www.consult.galwaycity.ie

We would appreciate if you would provide your feedback by **1st March 2024**.

1. What do you like about the existing park?

2. What don't you like about the existing park?

3. How do you use the park currently? **(Tick as appropriate)**

- > I live/work nearby the park and go there as part of my daily/weekly routine _____
- > I travel through it as part of my commute _____
- > I use the park as part of school/sports/work activities _____
- > I travel through it on a walk or cycle _____
- > I use the park as part of my leisure/exercise routine _____
- > I go past the park but rarely go inside _____
- > Other _____

4. What types of spaces do you think should be included in the park? Please indicate the importance of the following elements in the design proposals.
(1 Not important at all, 2 Not very important, 3 Neutral, 4 Important, 5 Extremely Important)

	1	2	3	4	5
Space for younger children					
Space for older children					
Water elements within the Park					
Small Events Space in the Park					
Viewpoint across water					
Seating in the Park					
Fencing/hedging around the Park					
Areas for sitting / picnics					
Spaces which improve the biodiversity of the park through use of native grass seeding and planting					
Retention of Trees in the Park					
Planting of new Trees in the Park					
Improved surface water drainage					
Cycle stands					
E-bike charging stations					
Improved pedestrian movement					
Shared Space outside the Park					
Retention of Vehicle Parking outside the Park					
Installation of Artwork in the Park					

5. What do you like about the proposed design?

6. Is there anything you feel is missing from the proposed new park design?

7. Is there anything else you would like to tell us about the Woodquay Park area that you think we should know?

8. Are there any notable features, landmarks, place names or local heritage that should be retained or reflected in our designs for Woodquay Park?

9. Do you have any additional comments?



General Information

Please provide contact details if you are happy to do so:

Name: _____

Organisation: _____

Address: _____

Email address: _____

Are you happy for us to contact you on the email address provided?

Yes ____

No ____

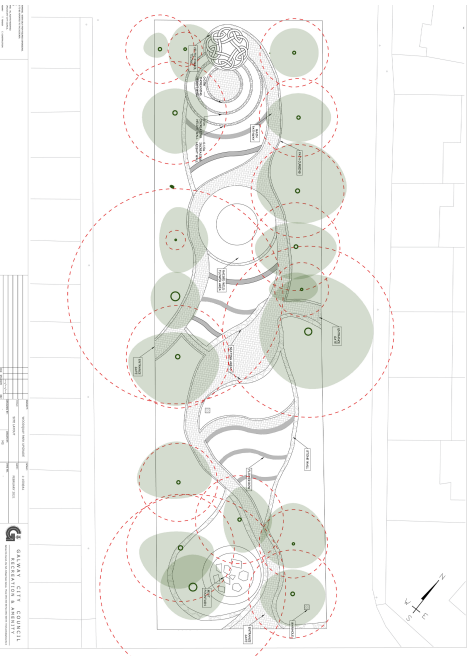


APPENDIX 4

JUNE CONSULTATION DISPLAY SHEETS

Concept plan comparison

Original Concept Plan Woodquay Residents Association



Design Feedback (GCC & LUC)

- Integrate into the wider area by extending the site boundary.
- Assess impacts on existing trees.
- Assess impact on views to Corrib.
- Assess impacts to local ecology and habitats.
- Further survey work required to inform the proposals; topographical survey, tree survey, ecology survey, site investigation and CCTV survey.
- Proposals should include Sustainable Urban Drainage Plan.
- Planting should be in accordance with All-Ireland Pollinators Plan.
- Review the needs of other park users.
- The design must meet the requirements of the primary funding source; Fáilte Ireland Urban Animation Scheme.
- The design must consider future maintenance regimes and budgets.

February Concept Plan LUC



Design Feedback (Community)

- It's not the original design!
- Parking to Corrib Terrace should be kept where it is, not be moved closer to houses (views/light).
- There is too much paving and not enough grass / soft space.
- The design needs to be more flowing, less obvious routes.
- Loss of original features (mounds, large lawn, fountain, amphitheatre)
- Design is too angular, curves are preferred.
- Don't like the rill through the park.
- Don't like the amphitheatre.
- A boundary to the park is needed.
- Concerns about cycle access from The Plots.
- Loss of trees.
- Planting of too many trees (over-shading)
- Impacts to wildlife.
- Detail of planting.

June Concept Plan LUC



Design Changes (LUC)

- Parking remains on opposite side of Corrib Terrace.
- Extent of hard surfacing reduced within the core of the park.
- A more organic design, with flowing curves to routes and spaces and meandering pathways.
- Play mounds, tiered seating adjacent the Corrib, large lawn area and wildflower areas retained within the design.
- Rill omitted.
- Hedge boundary provided.
- Access through from The Plots maintained, enhancing wider connectivity to the city centre.
- Four trees removed (2 category 'C', two category 'B').
- Re-planting proposals to use smaller-growing species to maintain views and sightlines.
- Topographical survey, tree survey, site investigation survey undertaken and feeding into the design.
- Bat survey and ecology survey undertaken to assess potential impacts on wildlife (results awaited).

Revised Concept Design



Woodquay Park

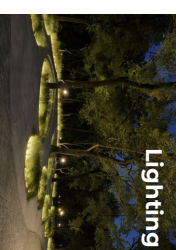
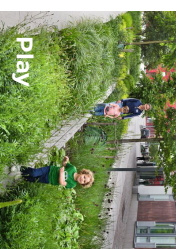
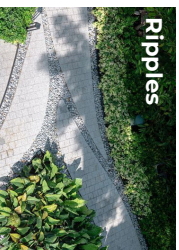
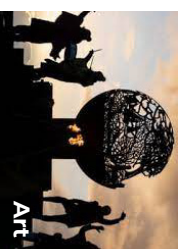
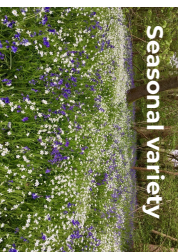
Proposed changes

- 1 Two way access maintained to Riverside.
- 2 One way access created to Corrib Terrace.
- 3 8 metered parking spaces provided on Riverside, which will be re-lined to the locations shown.
- 4 13 metered parking spaces provided on Corrib Terrace, adjacent the Park. These will be re-lined to the locations shown.
- 5 New pedestrian crossings provided to enhance access into and links through the park to other city destinations.
- 6 Two EV charging points maintained on Riverside.
- 7 Two extended accessible parking bays provided, allowing rear ramp access.
- 8 Vehicle access maintained to 7 Riverside.
- 9 5 motorcycle spaces provided.
- 10 10 cycle hire stands re-located.
- 11 10 parking spaces within existing parking area to be removed. Headford Road perimeter top to be upgraded by others as part of Cross City Bus Link.
- 12 Cycle hire station to be relocated to this area.
- 13 Level crossing provided to extend park to the edge of the Corrib.
- 14 4 trees would be removed. One Grey Alder would be removed from the centre of the park, to open up views to the river. Two Swedish Whitebeam and one Silver Birch would be removed from the Waterside end of the park. The Birch is near the end of its lifespan and the Whitebeam is growing within the hedge. 8 new trees will be planted.
- 15 Galway Orb installed as light feature at edge of Headford Road.
- 16 Scale of paths and hard surfacing reduced to maintain green character of Park. Paved areas would be located away from mature trees to minimise disturbance to their roots.
- 17 Informal 'island' seating is interspersed throughout the Park. Bench seating is also set within wildflower planting along the edges of the space.
- 18 Large lawn maintained within sunnier area of Park.
- 19 Climbing mound provides opportunities for natural play.
- 20 Smaller lawn with Spring-flowering bulbs.

'Eyes on the Street'

The Corrib

Animation



Design Themes